



## United States Geography Championships and International Geography Bee 2021-2022 National Qualifying Exam - A Set Version

Name \_\_\_\_\_ Grade (8<sup>th</sup>, 9<sup>th</sup>, 10<sup>th</sup>, 11<sup>th</sup>, etc.) \_\_\_\_\_

School / Homeschool Affiliation \_\_\_\_\_

Check here \_\_\_\_\_ if you were born before July 1, 2006 (if so you are a Varsity student for USGC and IGB competitions)

Check here \_\_\_\_\_ if you were born on or after July 1, 2006 (if so you are a JV student for USGC and IGB competitions)\*

\* Students in grades 6-8 are eligible to compete in both JV and Middle School divisions. Students in grade 5 or younger are eligible to compete in both the JV and Elementary divisions. If you are in grade 8 or younger and qualify for JV nationals based on this exam you are eligible to compete at Middle School or Elementary Nationals (depending on your grade) for USGC and IGB without taking another exam.

Email address for score report (please print neatly) \_\_\_\_\_

**Instructions – Print the letter of the correct answer in the space provided or leave it blank. Write neatly and in capital letters. Correct answers are worth 2 points. Incorrect answers are worth –1 point. Questions left blank are worth 0 points.**

Questions 1-7 refer to image 1 in the resource section of the examination. This image shows the population of a certain country broken down by age group.

\_\_\_\_\_ 1. Which of the following is true of the population of this country?

- A. it has grown by over 5% per year since 1980
- B. it had roughly the same population in 2000 and 2020
- C. it has seen a recent spike in birth rate
- D. it reached its peak in the early 1990s
- E. it has grown by roughly 20 million since 1980

\_\_\_\_\_ 2. Roughly what percentage of the population of this country was under 24 years old in 2020?

- A. 5%
- B. 15%
- C. 25%
- D. 35%
- E. 45%

\_\_\_\_\_ 3. Which of the following would characterize the population pyramid of this country?

- A. a wide base and rapidly narrowing top
- B. relatively straight sides (from birth to 34 years old) and a rapidly narrowing top indicating a rising life expectancy
- C. relatively straight sides (from birth to 44 years old) and a gently curving top indicating a high life expectancy
- D. a narrow base (from birth to 14 years old) with bulges in some older age ranges, including around 64-69
- E. none of these accurately describe this country's population pyramid

\_\_\_\_\_ 4. In what stage of the demographic transition model is the country represented here?

- A. Stage 5
- B. Stage 4
- C. Stage 3
- D. Stage 2
- E. Stage 1

\_\_\_\_\_ 5. Which of the following countries would be considered a stage 2 country in the demographic transition model?

- A. Canada
- B. Thailand
- C. Bulgaria
- D. Mali
- E. China

\_\_\_\_\_ 6. Which of these is NOT considered in the demographic balancing equation?

- A. births
- B. deaths
- C. population doubling time
- D. immigration
- E. emigration

\_\_\_\_\_ 7. Which of these countries is most likely represented by this chart?

- A. the United States
- B. Russia
- C. Mexico
- D. Brazil
- E. Japan

Questions 8-14 refer to image 2 in the resource section. This image shows the Aral Sea in 1989 on the left and in 2014 on the right.

\_\_\_\_\_ 8. Which of the following is most responsible for the shrinking of the Aral Sea since the 1960s?

- A. oil exploration
- B. diversion of water for irrigation of farmland
- C. climate change
- D. hydroelectric projects on the Sur Darya River
- E. personal water consumption by increasing populations in the Ferghana Valley

\_\_\_\_\_ 9. Which of these countries is NOT in the Aral Sea drainage basin?

- A. Uzbekistan
- B. Kazakhstan
- C. Afghanistan
- D. Russia
- E. Iran

\_\_\_\_\_ 10. Based on the image, which of the following best describes the change in the Aral Sea between 1989 and 2014?

- A. the entire lake has lost about 10% of its surface area
- B. the North Aral Sea disappeared completely by 2014
- C. its entire western edge has dried up
- D. its disappearance has left fertile farmland
- E. the South Aral Sea shrunk by roughly 90% between 1989 and 2014

\_\_\_\_\_ 11. Which of the following is the main cash crop of Uzbekistan, fed largely by irrigation from the Amu Darya River?

- A. melons
- B. almonds
- C. cotton
- D. rice
- E. tobacco

\_\_\_\_\_ 12. Worldwide, roughly what percentage of accessible fresh water is used for irrigation?

- A. 5%
- B. 25%
- C. 50%
- D. 70%
- E. 95%

\_\_\_\_\_ 13. Which of these is NOT a problem associated with irrigation of crops?

- A. seed banking
- B. chemical runoff
- C. salinization
- D. water supply contamination
- E. loss of water to leaks and faulty equipment

\_\_\_\_\_ 14. Which of these is NOT true of aquaculture?

- A. it is responsible for roughly 50% of the world's seafood production
- B. it has increased the availability of fish protein in many places
- C. it is the fastest growing form of food production on the planet
- D. open-pen systems allow some interaction between farm fish and the local environment
- E. it has almost no environmental impact

Questions 15-21 refer to image 3 in the resource section of the examination.

\_\_\_\_\_ 15. What language, represented by 1 on the image, is the second most commonly learned in the world?

- A. French
- B. Arabic
- C. Swahili
- D. Italian
- E. Portuguese

\_\_\_\_\_ 16. Which of the following numbers on the chart represents Papua New Guinea?

- A. 7
- B. 6
- C. 5
- D. 4
- E. 3

\_\_\_\_\_ 17. What nation is represented by number 5 on the chart?

- A. the United States
- B. Poland
- C. Canada
- D. the Netherlands
- E. Croatia

- \_\_\_\_\_ 18. Which of these is NOT true of linguistic diversity in the United States?
- A. immigration plays a large role in the large number of first languages spoken in the US
  - B. Spanish is the predominant language other than English spoken in American homes
  - C. roughly 20% of Americans can converse in two or more languages
  - D. less than 10% of Americans speak a language other than English at home
  - E. there are roughly 400 distinct first languages spoken in the United States

- \_\_\_\_\_ 19. Which country is most likely to be represented by number 3 on the chart?
- A. India
  - B. Iran
  - C. North Korea
  - D. Cuba
  - E. Botswana

- \_\_\_\_\_ 20. Which of these major world languages did not spread widely through diffusion?
- A. English
  - B. Mandarin Chinese
  - C. Arabic
  - D. Spanish
  - E. French

- \_\_\_\_\_ 21. Which of these is the term for a boundary between areas with different pronunciation or word usage?
- A. language barrier
  - B. creole
  - C. pidgin
  - D. isogloss
  - E. lingua franca

- \_\_\_\_\_ 22. Which of the following best defines the term toponym?
- A. it is simply the name of a specific place or location
  - B. it is a place name that must be derived from the name of a person
  - C. it is the name given to the capital or administrative center of a country or sub-national unit
  - D. it is the specific term for the largest city in a given nation
  - E. none of these defines toponym

- \_\_\_\_\_ 23. Which of these is NOT true of the Mercator projection?
- A. it is conformal
  - B. it shows Alaska as roughly the same size as Australia or Brazil
  - C. it inflates the size of objects close to the equator
  - D. it was designed in part for use in marine navigation
  - E. it is still used, in a modified form, by web services like Google Maps

- \_\_\_\_\_ 24. Which of these has the lowest population density?
- A. Russia
  - B. Saudi Arabia
  - C. New Zealand
  - D. Sweden
  - E. Australia

- \_\_\_\_\_ 25. Which of the following best characterizes immigration to the United States since 1965?
- A. there has been very little legal immigration to the United States since 1965
  - B. most immigrants to the US since 1965 have come from Northern and Western Europe
  - C. most immigrants to the US since 1965 have come from Southern and Eastern Europe
  - D. since 1965 the vast majority of immigrants to the US have come from Great Britain, Canada and other English-speaking nations
  - E. since 1965 immigrants to the US have come predominantly from Latin American, Asian and African countries

- \_\_\_\_\_ 26. The Epidemiological Transition Model predicts that which of the following might happen to countries in Stage 5?
- A. crude death rate will drop due to improved sanitation
  - B. vaccines will control pandemics leading to higher life expectancy
  - C. infectious diseases will be the leading cause of death
  - D. infectious diseases may resurge due to globalization and ease of travel
  - E. birth rate will increase rapidly

- \_\_\_\_\_ 27. The spread of Walmart stores in the United States is a classic example of which of the following?
- A. hierarchical diffusion
  - B. reverse hierarchical diffusion
  - C. contagious diffusion
  - D. stimulus diffusion
  - E. relocation diffusion

- \_\_\_\_\_ 28. Which of the following best defines acculturation?
- A. the coexistence of several cultures within a society
  - B. anti-immigrant attitudes, including violence, that may exist in a society
  - C. the adoption of some values of a receiving culture while retaining some practices of the native culture
  - D. the condition that occurs when an immigrant group can no longer be distinguished from the receiving group
  - E. the actions, beliefs and learned behaviors of a particular group

\_\_\_\_\_ 29. Shintoism is an example of which of the following?

- A. a syncretic religion
- B. an Abrahamic religion
- C. a monotheistic religion
- D. a polytheistic religion
- E. a shamanistic religion

\_\_\_\_\_ 30. Which of these has been most influential in shaping the demographics of religion in the United States?

- A. climate and the natural landscape
- B. immigration
- C. regulation by the federal government
- D. modern technology including the Internet
- E. agricultural and economic production

\_\_\_\_\_ 31. Which of these is considered a push factor for immigration?

- A. religious freedom
- B. economic opportunity
- C. established familial ties
- D. political unrest
- E. educational choice

\_\_\_\_\_ 32. Which of these is a satellite-based navigation system first developed by the Soviet Union in the 1970s?

- A. NASA
- B. GIS
- C. GPS
- D. NAFTA
- E. GLONASS

\_\_\_\_\_ 33. Which of these nations did NOT join NATO during its expansion phase from 1982 to 2009?

- A. Poland
- B. Ukraine
- C. Estonia
- D. Latvia
- E. Czech Republic

\_\_\_\_\_ 34. All of these are true of stateless nations EXCEPT which of the following?

- A. Kurds and Tamils are the only stateless nations with a population over 5 million
- B. the ethnic group does not constitute the majority population in any nation state
- C. they are not generally represented in international sports or organizations
- D. they are often dispersed across a number of states
- E. the Iberian Peninsula is home to multiple stateless nations

\_\_\_\_\_ 35. The westward expansion of the United States in the nineteenth century is an example of which of the following concepts?

- A. territoriality
- B. Heartland Theory
- C. Rimland Theory
- D. irredentism
- E. Organic Theory

\_\_\_\_\_ 36. Which of these areas would historically be considered a shelterbelt?

- A. Japan
- B. the eastern United States
- C. the Caucasus mountain region
- D. central Canada
- E. Brazil

\_\_\_\_\_ 37. Which of these is the term for a corporation that attempts to control each step in the production of a particular good or product?

- A. economy of scale
- B. vertical integration
- C. horizontal integration
- D. transnationalism
- E. networking

\_\_\_\_\_ 38. A fence built to separate a pasture owned by one farmer from that of his neighbor is an example of which of the following?

- A. a defined boundary
- B. a delimited boundary
- C. a demarcated boundary
- D. a geometric boundary
- E. this fence may be an example of all four of these boundary types

\_\_\_\_\_ 39. Which of these is NOT a centripetal force with regard to nations or societies?

- A. nationalism
- B. economic development
- C. income inequality
- D. a fair and equitable legal system
- E. a robust public education system

\_\_\_\_\_ 40. All of these are reasons for the failure of the Green Revolution in Africa EXCEPT which of the following?

- A. African farmers refused to adopt new practices
- B. Africa has a large diversity of climates and soils
- C. Africa is large and lacks a robust transportation infrastructure in many places
- D. there was a lack of research by Green Revolution scientists on many African staple crops like sorghum and millet
- E. many regions in Africa have harsh environmental conditions

\_\_\_\_\_ 41. The seasonal herding of animals from higher elevations in the summer to lower elevations in the winter is known by what term?

- A. shifting cultivation
- B. transhumance
- C. subsistence agriculture
- D. intercropping
- E. CAFOs

\_\_\_\_\_ 42. In Von Thünen's land use model, which of these would be farthest from the center?

- A. livestock
- B. the market
- C. horticulture
- D. forest land
- E. grain farming

\_\_\_\_\_ 43. Which of these is economic activities is part of the tertiary sector?

- A. forestry
- B. manufacturing
- C. banking
- D. construction
- E. mining

\_\_\_\_\_ 44. All of these are issues with Alfred Weber's least cost theory EXCEPT which of the following?

- A. raw materials are often found in many locations as opposed to fixed locations as assumed by Weber's model
- B. products are sold in more than one location or market as opposed to a single market in a fixed location
- C. labor is mobile and is available in multiple locations as opposed to being available only in a fixed location
- D. economic factors are the only things considered in the location of factories as opposed to emotions or tradition
- E. owners may want to maximize revenue as opposed to minimizing costs

\_\_\_\_\_ 45. Urban brownfields are characterized by which of the following?

- A. transportation infrastructure like railroads
- B. ports and shipping containers
- C. new factories on the edges of cities
- D. export processing zones in border areas
- E. abandoned factories and industrial areas

\_\_\_\_\_ 46. Which of these would be considered a semi-periphery country in Wallerstein's world systems theory?

- A. South Africa
- B. Haiti
- C. Iraq
- D. Kazakhstan
- E. Mongolia

\_\_\_\_\_ 47. In what historical period would the United States have reached the fourth stage of Rostow's economic growth model, the 'Drive to Maturity'?

- A. the colonial period
- B. the early nineteenth century with the advent of the industrial revolution
- C. the mid-nineteenth century
- D. the late nineteenth century during the 'Second Industrial Revolution'
- E. the mid-twentieth century

\_\_\_\_\_ 48. Which of these countries does NOT conform to the rank-size rule?

- A. the United States
- B. Canada
- C. Australia
- D. the United Kingdom
- E. India

\_\_\_\_\_ 49. All of these are true of the galactic city model EXCEPT which of the following?

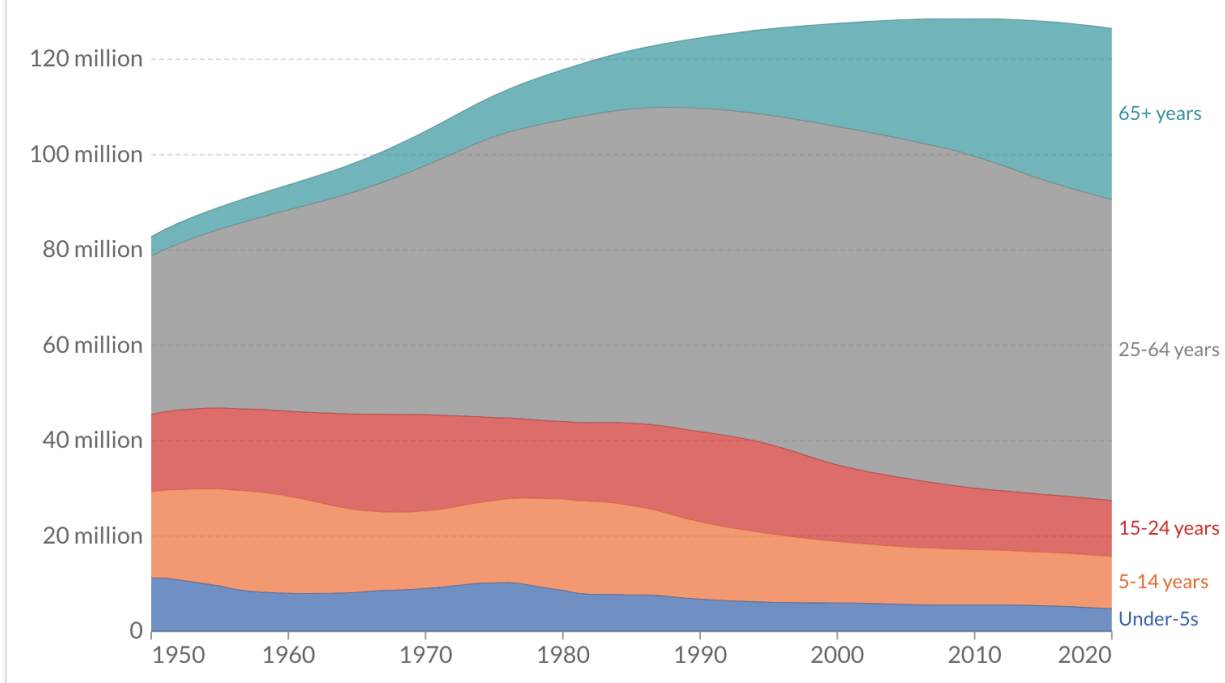
- A. it accounts for the decline of the CBD as cities grow
- B. suburbs, residential and commercial areas are tied together by transportation networks
- C. it does not account for the advent of and reliance on the automobile
- D. it factors in the growth and importance of suburbs
- E. it is based on an intensive study of Detroit, Michigan

\_\_\_\_\_ 50. Tobler's 'first law of geography' is a statement that reflects which of the following geographic concepts?

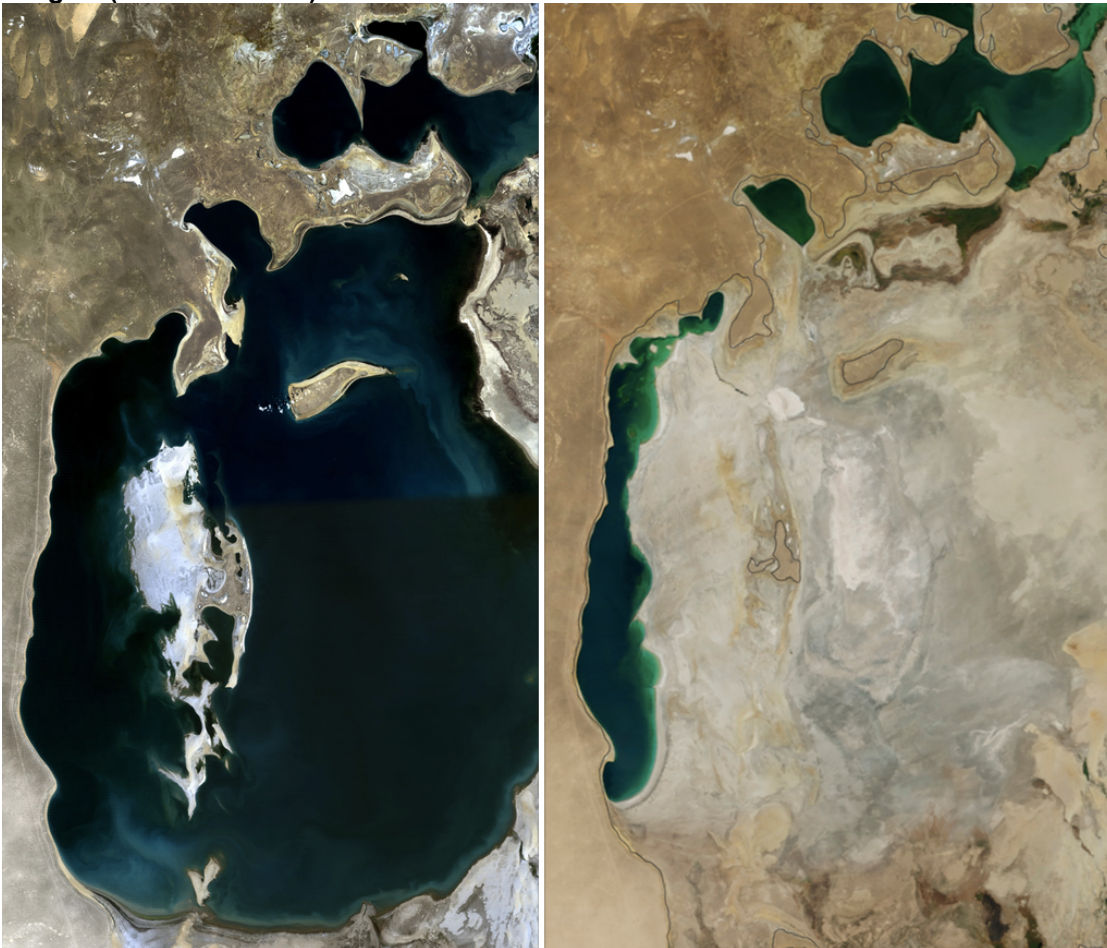
- A. nationalism
- B. distance decay
- C. suburbanization
- D. irredentism
- E. devolution

**USGC A-Set Exam  
Resource Section**

**Image 1 (Questions 1-7)**

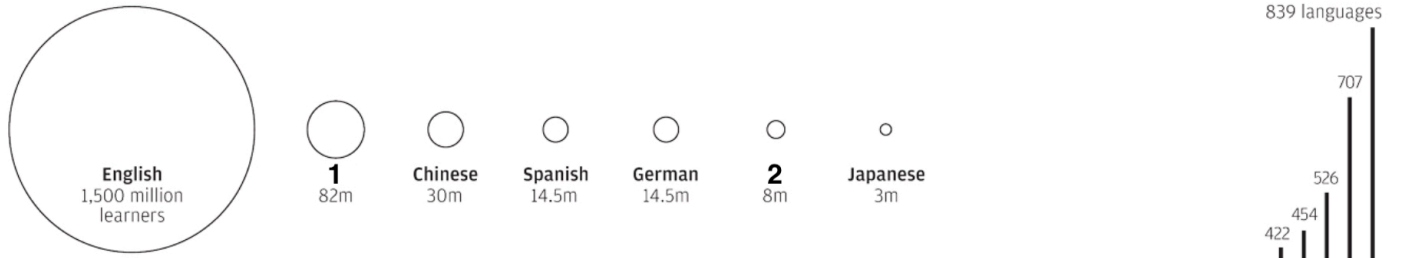


**Image 2 (Questions 8-14)**



### Image 3 (Questions 15-21)

Most popular languages being learned around the world



Distribution of living languages by country

The total count of living languages used as a first language in 60 countries

