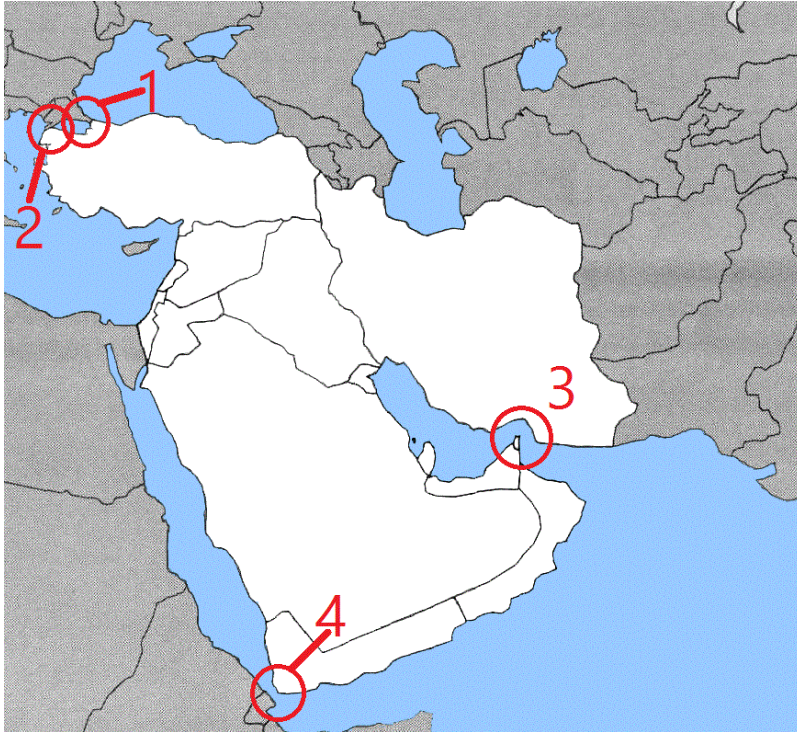


UNITED STATES GEOGRAPHY OLYMPIAD
2014 NATIONAL CHAMPIONSHIP
PART ONE

Two points are awarded for a correct answer. One point will be removed for an incorrect answer. Zero points will be awarded for a question left blank.



1) The Battle of Gallipoli was fought in and around which of the following straits?

- a) 1
- b) 2
- c) 3
- d) 4

2) Circle 3 includes Musandam, a territory surrounded by UAE that is an enclave of which country?

- a) Oman
- b) Iran
- c) Yemen
- d) Saudi Arabia

3) A boat ride from Sharm el-Sheikh to Kismayo (not recommended) would pass through which of the following?

- a) 1
- b) 2
- c) 3
- d) 4

4) The Golden Horn, located near the Hagia Sofia, is a body of water located within what circle?

- a) 1
- b) 2
- c) 3

d) 4



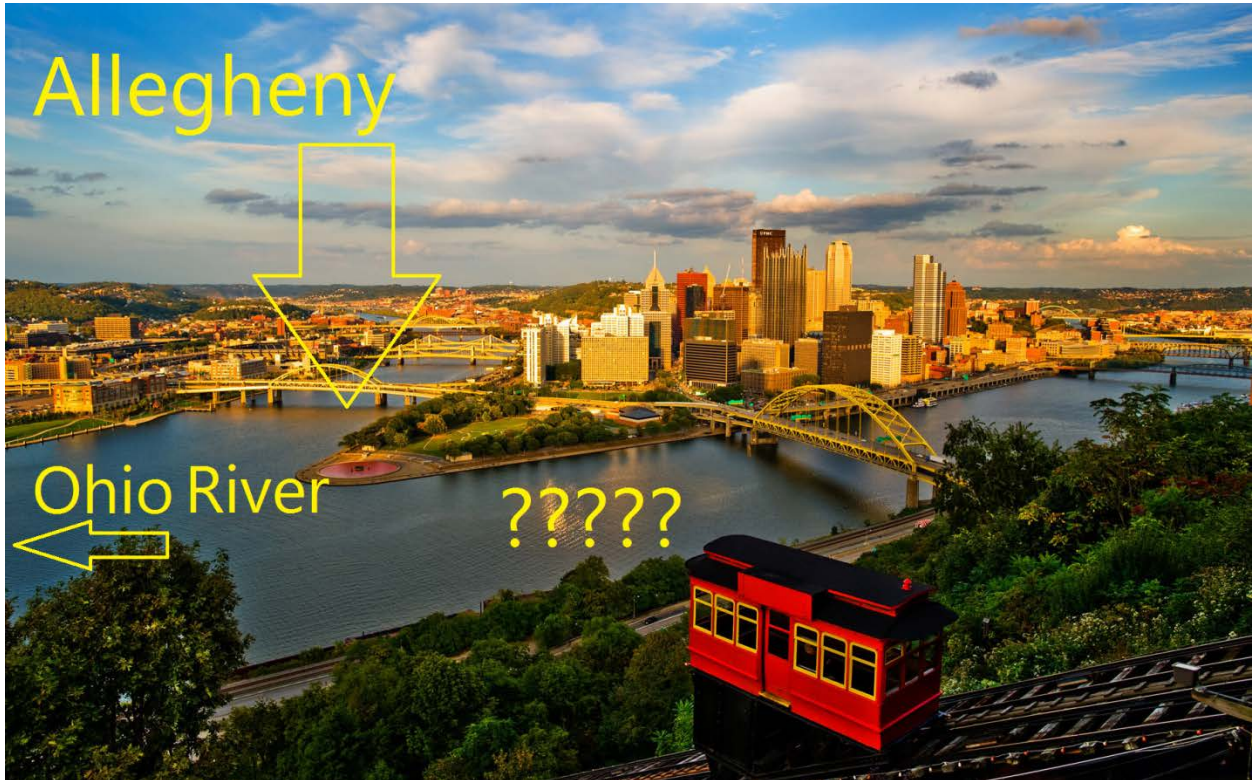
Questions 5-7 will address this picture.

- 5) This picture is of Phuket Island, a tourist destination in the Andaman Sea on the west coast of what country?
 - a) Myanmar
 - b) India
 - c) Malaysia
 - d) Thailand

- 6) Phuket was hit hard by the Boxing Day tsunami, which killed over 230,000 people and took place in December of what year?
 - a) 1989
 - b) 1998
 - c) 2004
 - d) 2012

- 7) The theft of two passports in Phuket were at one point seen as potentially crucial in what event?

- a) September 11 attacks
- b) Disappearance of Malaysia Airlines flight 370
- c) The Mumbai hotel bombing
- d) The end of the Sri Lankan civil war



Use the following image to answer the next three questions

- 8) Shown in this image is the meeting of two rivers, known technically by what term?
 - a) Confluence
 - b) Aquatic convergence
 - c) Water margin
 - d) Bifluvium

- 9) What is the name of the river shown with question marks?
 - a) Muskingum
 - b) Morgana
 - c) Monongahela
 - d) Mississippi

10) What city is shown in this photograph?

- a) Saint Louis, MO
- b) Louisville, KY
- c) Pittsburgh, PA
- d) Cincinnati, OH

Use the following map for the next four questions.



11) Which of the following numbered states or territories would you have to visit to see Sydney?

- a) 4
- b) 5
- c) 6
- d) 7

12) Which of the following is not a state?

- a) 1
- b) 2
- c) 3
- d) 8

13) Where would you go to find the western half of the Nullarbor Plain, the port of Fremantle, and the mining town of Kalgoorlie?

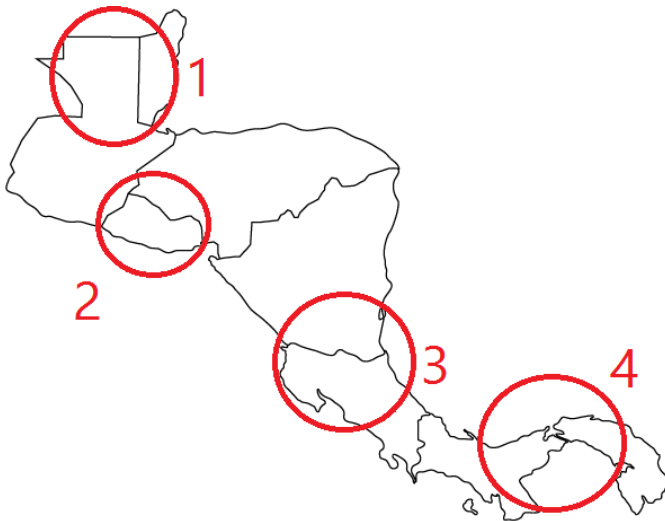
- a) 1
- b) 2
- c) 3
- d) 6

14) Which of the following numbers is Victoria?

- a) 3
- b) 4
- c) 5

d) 6

Answer the next four questions using the following map.



15) Which of the following circles would you find a national capital city beginning with San?

- a) 1 and 2
- b) 2 and 3
- c) 2 and 4
- d) 1 and 3

16) Where would you find Lake Madden, Lake Gatun, and use the balboa as one of the official currencies?

- a) 1
- b) 2
- c) 3
- d) 4

17) Where would you find ancient Mayan ruins in the Peten region, as well as the city of Belmopan?

- a) 1
- b) 2
- c) 3
- d) 4

18) The island of Omotepe is in a large lake in which circle?

- a) 1
- b) 2
- c) 3
- d) 4

Match the African rivers with the country their source can be found.

- 19) Volta
- 20) Niger
- 21) Zambezi
- 22) Orange

- a) South Africa/Lesotho border
- b) Near Zambia/DRC/Angola border
- c) Burkina Faso
- d) Guinea



23) The Trans-Siberian Railway runs 5,772 miles from Moscow to what port city?

- a) Rostov-na-Donu
- b) Murmansk
- c) Norilsk
- d) Vladivostok

24) The train stops in Irkutsk, which is on the Angara River, a tributary of what river, the largest river system to flow into the Arctic?

- a) Ob
- b) Lena
- c) Yenisei
- d) Kara

25) The railroad passes through what third-largest city in Russia, the largest in Siberia and largest in Asiatic Russia?

- a) Yekaterinberg
- b) Perm
- c) Ulan Ude
- d) Novosibirsk

26) The railroad crosses which river near its eastern terminus, the 10th-longest river in the world, a river that serves as part of the border between Russia and China before emptying near the Sea of Okhotsk?

- a) Amur
- b) Yalu
- c) Ob
- d) Han



27) Pictured is a mounted soldier involved in the conflict in Darfur, a member of what militia which brutalized western Sudan?

- a) Janjaweed
- b) Mujahedeen
- c) Taliban
- d) Abyei

28) 262,900 refugees from the conflict in Sudan to what country, which is along most of Sudan's western border?

- a) Libya
- b) Chad
- c) Central African Republic
- d) Niger

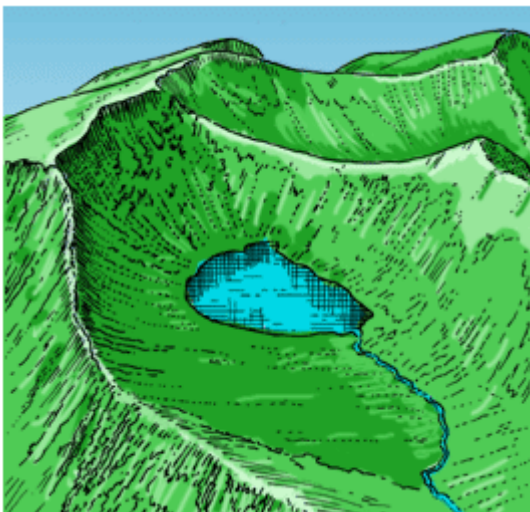
29) In 2008, the Justice and Equality Movement, a Darfurian rebel group, attacked Khartoum and what nearby city, the largest in Sudan?

- a) Jamobi
- b) Meni

- c) Omdurman
- d) Mangorita

30) South Sudan, which gained its independence from Sudan in 2011, has its capital at what city?

- a) Juba
- b) Hachmen
- c) Zenten
- d) Bor



31) These features were likely created by what type of glaciers?

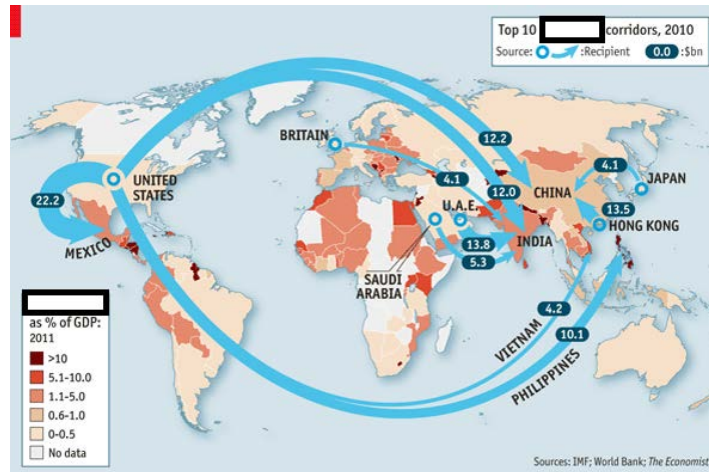
- a) Continental
- b) Alpine
- c) Anthratic
- d) Post-Volcanic

32) The ridge on the left, separating two glacial depressions near the top of a mountain, is known by what name?

- a) Tupac
- b) Col
- c) Esker
- d) Arete

33) What is the name for lakes that form after glaciers near the tops of mountains move down the mountain, like the one shown in the picture?

- a) Brettle
- b) Moraine
- c) Esker
- d) Tarn



34) This map shows what monetary transfers, usually from individuals to their families in another country?

- a) Remittances
- b) Externalities
- c) Parlanges
- d) Depositions

35) Where are you sitting right now, taking this test?

- a) 47.2 N, 155.1 E
- b) 31.0 N, 111.2 W
- c) 38.9 N, 77.1 W
- d) 22.9 N 42.0 W

All of the points represent mountains. Each mountain is the highest in its state.



36) Which of the following is the highest peak in the United States east of the Mississippi?

- a) 7
- b) 8
- c) 9
- d) Not labeled

37) Which of the following is Gannett Peak?

- a) 1
- b) 3
- c) 5
- d) 9

38) Which of the following is the highest peak in the contiguous United States?

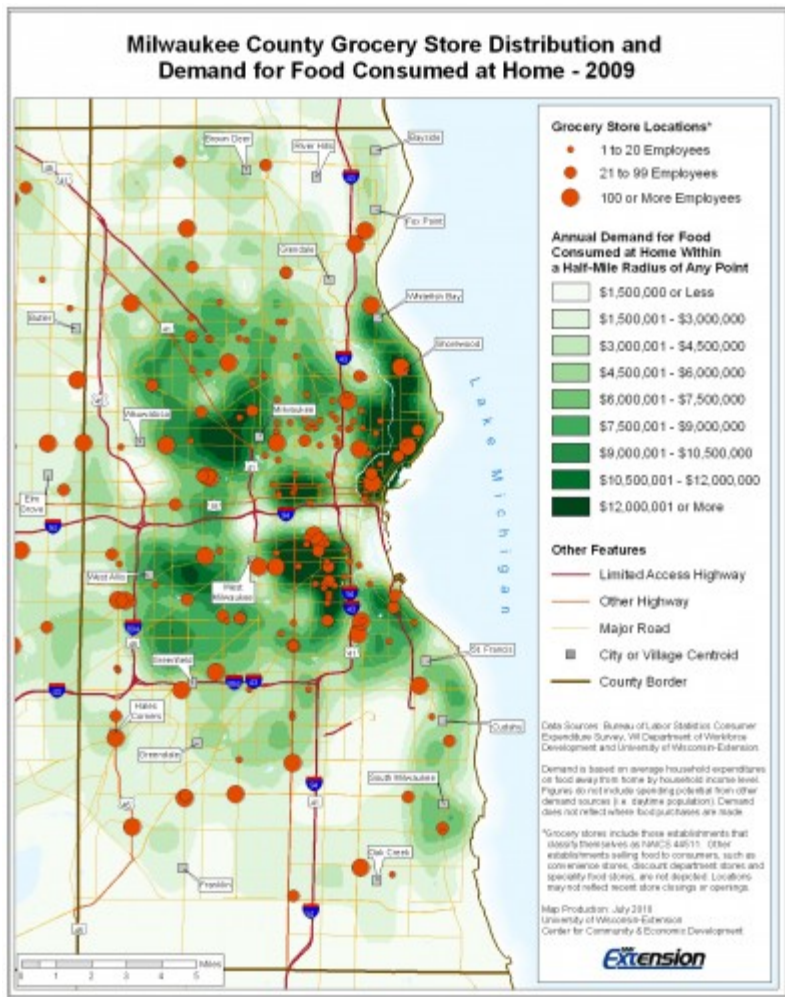
- a) 2
- b) 3
- c) 5
- d) 6

39) Which of the following is located in a national park?

- a) 1
- b) 2
- c) 8
- d) 9

40) What pair of mountains are named for U.S. presidents?

- a) 4 and 5
- b) 4 and 8
- c) 4 and 9
- d) 8 and 9



41) This map of grocery was made using GIS technology.

What does GIS stand for?

- a) Geographic Information Systems Service
- b) Geoid-Influenced Service
- c) Geographic Illumination Standard
- d) Gradiated Interdisciplinary Science

42) This map shows both the supply and demand of grocery stores. Who would most benefit from the overlap of BOTH of these spatial data sets?

- a) Tax assessors
- b) Grocery store chain looking to open a new location

location

- c) Police officers

d) Residents of Milwaukee



43) This is the flag of what country, a former British colony home to the city of Mombasa?

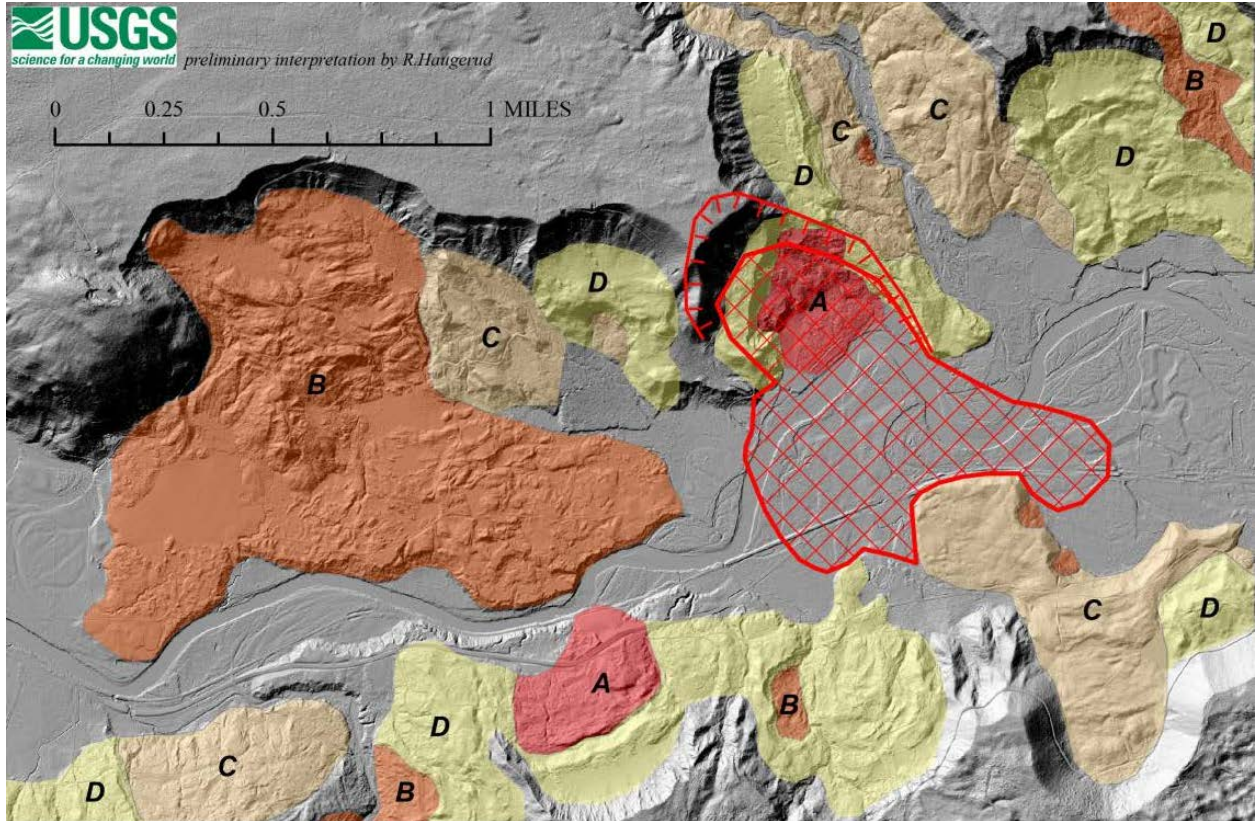
- a) Morocco
- b) Mozambique
- c) Zambia
- d) Kenya

44) While spears appear on many African flags, swords are common on flags around the world. Which of the following country's flags do NOT have a sword on it?

- a) Sri Lanka
- b) Saudi Arabia
- c) Iraq
- d) Angola

45) What is the name given to the study of flags?

- a) Drapealogy
- b) Banderetry
- c) Vexillology
- d) Flagellation



46) This map shows a 2014 mudslide that took place in which U.S. state?

- a) Tennessee
- b) Washington
- c) Oregon
- d) California

47) Which of the following is not a major contributor to the mudslide shown above ?

- a) Heavy rainfall
- b) High abundance of wildlife
- c) Forest removal
- d) Poor soil



48) This picture was taken where?

- a) Gibraltar
- b) Hong Kong
- c) Rio de Janeiro
- d) Denver

49) Where are you most likely to be eaten by a tiger while on a bird watching expedition in search of the Brown-winged Kingfisher?

- a) The Rub al-Khali
- b) The Sundarbans
- c) The Okavango Delta
- d) Ngorongoro Crater

50) Which World War II operation did NOT take place in Europe?

- a) Operation Overlord
- b) Operation Market Garden
- c) Operation Torch
- d) Operation Dragoon